

Construction is about to begin

Building works are about to begin at the Manukau SuperClinic.

From Monday 19 May 2008 two construction sites will be established. A new Renal Unit will be built to the north of the existing buildings, while to the South (at the back of the SuperClinic) works will include:

- A new module for Ophthalmology and Women's Health.
- A new Management and Planning/Booking Module.
- An extension to the Atrium to link these new modules to the existing Atrium and Clinics.
- Refurbishment of some of the General Medicine Clinics (Modules 5 and 6).
- Some infrastructure works.

The site plan on the next page highlights the construction zones, along with any site changes.

These include:

- Redirection of staff shuttle and deliveries. These services will only be able to reach material management by going around the **west side** of the current building.
- Access to the staff carpark will be via the **east side** of the current building.
- Additional staff parking will soon be available at the back of the site.

Contents:

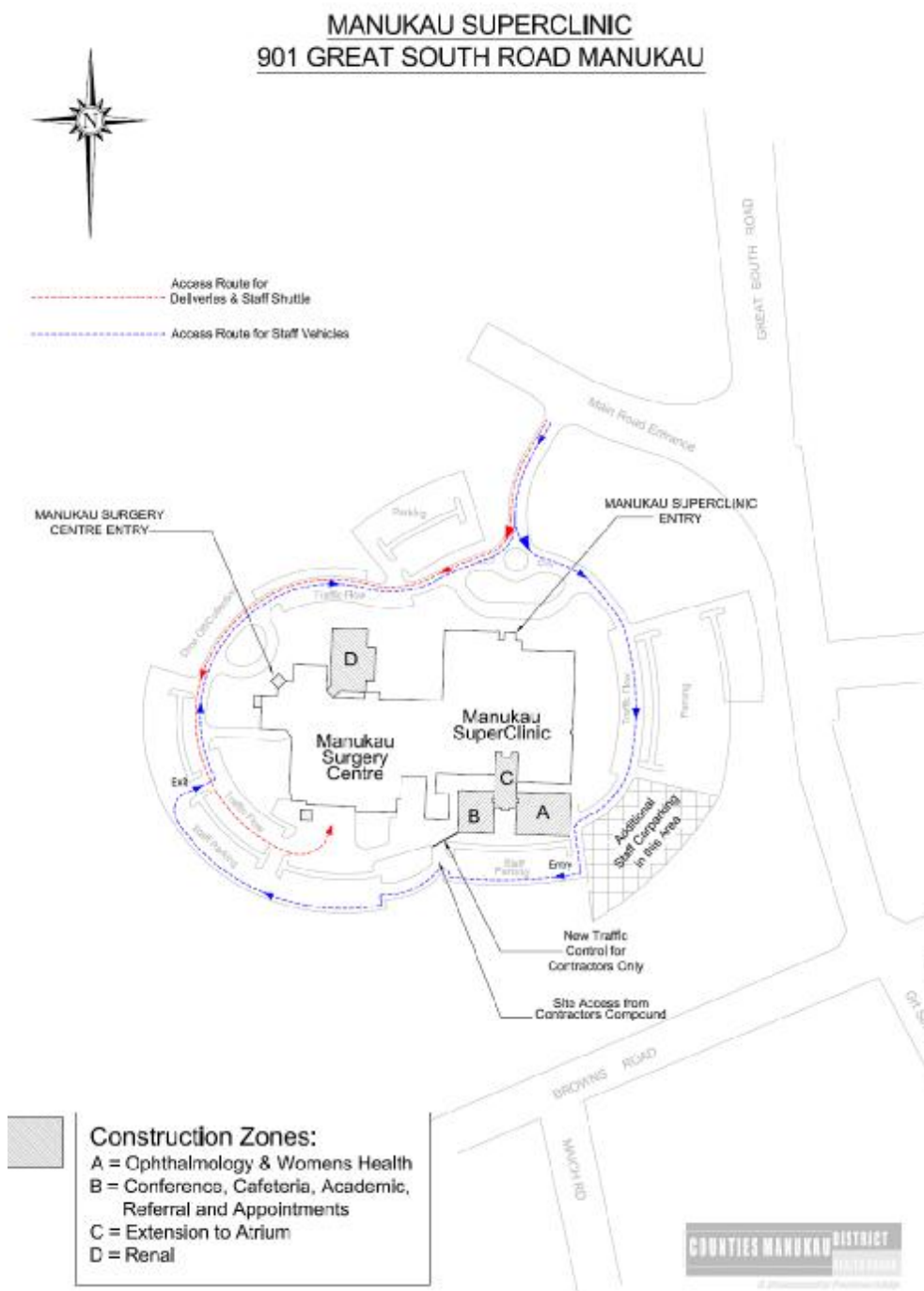
- The new Courtyard opens 16 May 2008.
- Come along to the 'official opening' of the new AMC Lobby and Courtyard.
- An insight into designing the new Intensive Care Unit (ICU).
- ICU on the move.
- Update - Theatre refurbishment.
- Revamp of Middlemore's decontamination area - Sterile Supply Unit.
- C-Floor (old Women's Health) gets a make-over.
- Colour scheme chosen for Tiaho Mai.
- Update - new Ward Block.
- What's happening by the pay-station, AMC Carpark.
- New lease of life for Botany Maternity.
- The Facilities and Engineering Department welcomes Mike McGuinn - carpenter.

Building works Manukau site continued ...

Carrying out building works around clinics and departments does bring its challenges and the project and construction teams will do their very best to minimise any disruption.

Work is expected to take about eleven months to complete (April 2009).

If you have any concerns throughout the construction period, please contact Carol Cameron, on extension 3945.



The new Courtyard OPENS 16 MAY 2008

The countdown begins for the 'official' opening of the new Lobby and Courtyard on Friday 16 May.

The last of the gritty, non-slip pavement is being laid in the Courtyard and the planting of native trees and plants has commenced.

The Smoke-Free Courtyard, connected to the main lobby is a place where all are welcome to sit, relax, and enjoy nature.



New Courtyard

It features various trees and plants chosen for their durability during the winter months and their ability to flower during the spring and summer months.

The Courtyard will provide a wonderful first impression for anyone entering the hospital and will provide some valuable time out for staff, patients and visitors. In fact many studies show that growing plants and trees can make you feel better.

The courtyard will be locked after hours i.e. from 8 pm - 7 am.

For those of you with green fingers, this is what you will find in the courtyard.

Alectryon Execelsus - Titoki

Shiny leaved tree. Flowers in the spring.

Corokia Geenty's Green

Large, light green leaves. Can produce orange berries.

Phormium Tenax Tom Thumb - Harheke

Compact, bronze-leaved form of the NZ Flax. It stays at around 35cm high.

The new Information Desk has arrived

The new circular information desk will be located in the centre of the lobby - in full view of people entering the Hospital.

From the Information desk you will be able to find your way to various departments and buildings. The improvement to way-finding will be significant.

The Information Desk will be staffed 7days per week 12 hours per day with up to 3 volunteers on a day shift.



The new Information desk

Designing the new Intensive Care Unit

Peddle Thorp Architects Haitham Alrubayee and Ian Conning have been involved with many of Middlemore's redevelopment projects, which include the Neonatal Unit, National Burn Centre and most recently the new Intensive Care Unit (ICU).

"Our brief for the new ICU was to design a space with good staff and patient flow, natural light to all clinical spaces, good patient observation and separation of patient/staff and visitor areas," says Haitham Alrubayee.

"The area we had to work with was the old Coronary Care Unit on Level 1 of the Acute Hub. This was an ideal location for the new Intensive Care Unit but did pose a challenge in regard to structures e.g. column grids that couldn't be removed. This meant working with what we had to ensure the facility accommodated the model of care requested by the users."

"We were fortunate to work with a group of people who understood the clinical requirements for the facility and could identify what they wanted," says Ian Conning. "This was reflected in the brief and the huge support we received from Marianne Scott (Towards 20/20 Service Improvement Manager) and Martin Cooper (RCP) who played a key liaison role between the design team and the users."

Haitham says the relationship between the architect and the user group is at its busiest during the first three phases of the design process: concept - ('big picture' of what is planned), preliminary - (provides more detail, including elevations, sketches and a selection of materials and finishes) and developed design - (refines the preliminary drawings).

"A lot of detail is covered during these phases," says Haitham "By the end of Phase 3 all key design decisions are made and agreed upon.

"During the latter phases User Group members can tour the facility during construction to see how their ideas have been translated into reality and confirm they have been correctly implemented.

"Overall we are very pleased with the new Unit and are looking forward to the opening."



Haitham Alrubayee



Ian Conning

ICU on the MOVE in June 2008

Over the past few years we've seen many changes to our facilities, both at Middlemore and Manukau. There have been new departments such as the Neonatal Unit and National Burn Centre, refurbished areas such as Radiology and upgraded areas for eg the old delivery unit (now the Cardiac Investigation Unit's temporary home).

All of these areas have one thing in common - the moving of people, patients, equipment and furniture to new locations - this process is called decanting and migration and is currently being planned for the new Intensive Care Unit.



Towards 20/20 Service Improvement Manager, Marianne Scott and Migration Coordinator Chris Jaggs

"The responsibility of moving ICU staff, patients and equipment falls on Chris Jaggs's broad shoulders. As Migration and Decanting Co-ordinator it's Chris's job to work with a broad range of people and services involved with the move. This includes scrutinising items being delivered to a new location, planning a moving route and assessing requirements for staff at their new site, including the location of furniture, computers, phone, power and data cabling.

"Although there is a standard template for moving hospital departments, ICU has its own specific needs and priorities which are factored into a unique relocation plan for that service," says Chris.

"The implications of this plan affect ICU staff, support services, Biomedical and Engineering, IS and Hotel Services, all of whom play a vital part in minimising risks to patients during the move.

"Allied Pickford (the moving company) is also briefed around the logistics of the move. This involves any special handling requirements, what equipment is needed and whether any specialised items need to be moved.

"Overall it's a real team effort."

ICU staff and patients move into the new Unit on Sunday 29 June 2008.

Update - Theatre Refurbishment

Our Hospital Engineers have become a familiar sight in Theatre as patient corridors, staff and support areas get a well deserved spruce-up.

Theatre Co-ordinator Robyn Hughes says staff are coping well with the building works and are looking forward to its completion (in approximately 3 months).



Theatre 11

“The most positive aspects for staff have been the new female and male change rooms and the new vinyl in the corridors,” says Robyn. “It’s been great coming in each morning and slowly seeing the old floor disappear.”

Building works are currently taking place in Theatre 11. This includes replacing the plant in the ceiling, new ducting, new lighting, new ceiling mounted pendants, new floor vinyl and wall paint. Historically this theatre has had a number of uses including a theatre for emergency caesarean, acutes, minor procedures and lately as storage. In the future it will be used as an acute theatre.

Re-vamp of Middlemore’s Decontamination Area - Sterile Supply Unit.

For the past few years Sterile Supply Unit (SSU) technicians have been working in a busy and confined area as they decontaminate and redistribute a vast array of theatre instruments and products. A review of this area identified lack of space, storage and inadequate work flow as areas for improvement.

In the coming weeks the decontamination area will undergo a ‘revamp’ that includes installation of extra storage units and cupboards for chemicals and cleaning solutions, a new sorting table for checking and directing items to the correct cleaning area, extra bench space and a new ultrasonic cleaner.

Specially designed units will also be used to store racks used to load the washers. This will avoid heavy lifting and be accessible to the sterile supply technicians. “The revamp has given the SSU staff an opportunity to look at the way they do things,” says Project Manager Pam Giffard. “The improvements will provide a more functional and efficient work space.”

C-Floor gets a make-over

Up and coming building works for Tiaho Mai will result in the temporary relocation of Tui Ward. Finding a new home was a challenging task and a number of options were considered.

Key priorities were identified as keeping the ward together and providing a safe environment for staff, service users and their family.

The area would also need to have a minimum of 18 bed spaces and be able to duplicate current spaces in Tui's current ward i.e. interview rooms, multipurpose rooms, lounge etc. Most importantly the area would have to be secure i.e. locked down when required.

After exploring all the options a decision was made to move Tui Ward to C-Floor, Level 3, old Women's Health Building.

This option meant Tui Ward could maintain its continuity of care while minimising disruption to service users and staff.

The patients moving to C-Floor will be 'lower acuity'.

The 'higher acuity' patients will remain at Tiaho Mai in Huia and Kuaka Wards.



C-Floor

The refurbishment of C-Floor will include:

- Securing windows.
- Installation of a solid ceiling.
- Covering up the medical services panels e.g. O2, suction etc.
- Painting walls.
- General tidy-up.

Blessing of C-Floor



Sister Mary leads the way

A small group turned out for the blessing of C-Floor, prior to refurbishment works taking place.

Pohiri Hamiora, Kuia Tawi Thompson and Chaplain (Sister Mary Keane) lead the moving ceremony, paying respect to people (staff and patients) who had worked or stayed in C-Floor throughout its long history.

Refurbishment works will take approximately 6-8 weeks to complete.

Colour scheme chosen for Tiaho Mai

Sea side, Paua and Pacifica are the colour themes being used for Tiaho Mai's new Tui Ward and refurbished Huia and Kuaka Wards (see below)

This decision follows weeks of consultation with staff, service users and architects.

Neutral colours have been chosen for the floor and base wall colours - this will remain consistent across all of the wards. Varying colours (blues and greens) were chosen for feature walls, curtains and doors.

The overall result will be a soothing, light and healing environment for service users and staff working within the Unit.

The building work on Tui will include individual bedrooms and ensuites for all service users, a specialised low stimulus area, self care kitchen and laundry, an outside courtyard and a 3 bedded Intensive Care Area (ICA) on the end of the ward with its own lounge, dining area and a seclusion suite.

All areas throughout Tiaho Mai will get new carpet and freshly painted walls. Vinyl will be replaced in specific areas and air-conditioning installed into parts of Huia that have poor air flow.



Colour Board for Tui Ward - Tiaho Mai.

The healing power of colours:

GREEN

Soothing, relaxing mentally as well as physically, helps alleviate depression, nervousness and anxiety, offers a sense of renewal, self-control and harmony.

BLUE

Calming, lowers blood pressure and decreases respiration. Ideal for sleep. Enhances communication and decision-making.

Update New Ward Block



New Ward Block



Building 7

What's coming up this month (May 2008)

- Over the next month (May 2008) you will see the building grow in height as the structure reaches 3 levels. This will be done gradually - in fact the building is split into 5 areas that are all at different stages of the structural sequence.
- The Northern Wing is making good progress with concrete floors and columns already in place for the Basement, Ground and Level 1.
- The Eastern Wing is not far behind with the basement and ground floors taking shape.
- The new lift for Building 7 will open shortly, then demolition of the old lift will take place.



Underground pipes are being laid.



The underground pipes cross the road

What's happening by the pay-station AMC Carpark?

Underground pipes are being laid for the new ward block. These pipes will carry stormwater, sewer and water mains to and from the new ward block.

As you can see from the second photo the underground pipes cross the road by the pay station.

As this is a busy area please take extra care. A pointsman will direct traffic.

New lease of life for Botany Maternity

The Botany Downs Maternity Unit is getting a make-over which includes painting the ceiling, walls and bedrooms and refurbishing three of the existing bathrooms with new vinyl, paint and new shower linings.

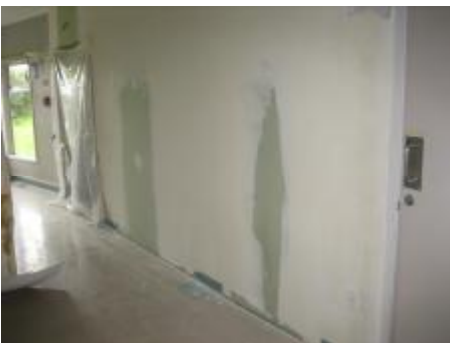
Construction of a new birthing room, including a birthing bath is also underway - this will bring the total of birthing rooms to 5 with 2 birthing baths.

Plans also include a new roof above the ambulance bay and recarpeting through-out the main foyer.

The Botany Downs Maternity Unit was opened in 1997 and over the past 11 years has suffered from general wear and tear.

The 'spruce-up' will help restore it to its former glory.

Work will take approximately 2 months to complete.



The corridors get a fresh lick of paint.



Construction of the new Birthing Room



Botany Downs "Whare Tapu" is the name gifted to Botany Downs Maternity Unit in a special ceremony by the people of the local Tainui iwi.

This conceptual meaning alludes to the most sacred beginning of life - the birth of a child.

All women who have had normal pregnancies and births previously, as well as first-time mothers, can birth at the community units.

Every year nearly 1200 women give birth at one of the three Counties Manukau District Health Board community maternity units in Botany, Papakura and Pukekohe.

The units are personal, friendly and quiet with nice surroundings. Because they are a dedicated maternity unit they are, of course very family friendly.

All the support services provided at Middlemore Hospital, such as lactation consultants, physiotherapy, social workers and maternal mental health services are available to women at the community units.

The Facilities and Engineering Department is delighted to have such an experienced carpenter join its team.

Mike McGuinn has spent forty years in the building trade, which includes working as a maintenance officer at Scott's Base in Antarctica and twenty years as master builder manager of G & H Trade Training School.

A change of pace and wanting to spend more time with family and friends brought him to his current job at Middlemore.



Although its only been 2 months in the job, Mike is settling in well. "The most challenging aspects have been finding my way around the hospital and getting some materials to the work site," says Mike.

"The best thing about the job is working with such a great team and of course there are the weekends off.

"So far the job is proving to be quite busy with a variety of jobs coming through the workshop.

"You learn very quickly that you need to be multi-skilled and a good problem solver."

The carpenters work from 7.30 am - 4 pm and can be found at the back of Building 27 (Engineering). If you need work done, log a job via the Engineering web site or call the Help Desk on extension 9770.

Works happening in Kidz First

It's amazing how a fresh coat of paint and minor repairs can help transform an area.

Mike and Sao (carpenters) have been carrying out minor repairs on Kidz First Surgical, while painter Bruce Richards has given the walls a fresh coat of paint.

The team is currently working on Kidz First Medical.



Carpenters Mike (left) and Sao carry out repairs to Kidz First Surgical.



Contact

Communications Coordinator

Janet Haley

TOWARDS 20.20

Counties Manukau District Health Board.

C/- Projects Office, Building 25

Private Bag 94052

South Auckland Mail Centre

Auckland

Ph: (09) 262-9500

Fax: (09) 270 9714

Mobile: 021 443 731

Email: haleyj@middlemore.co.nz

Web: www.cmdhb.org.nz

Towards 20/20 Web Site

In the internet explorer address bar type:

<http://www.cmdhb.org.nz>

Click onto Towards 20/20.

The Towards 20/20 web site has been designed to inform staff about the modernisation and redevelopment projects occurring across the CMDHB sites.

You'll find background information and regular updates on the various projects, along with updated photographs of construction activities, floor plans, copies of Towards 20/20 NEWS and much more.

